



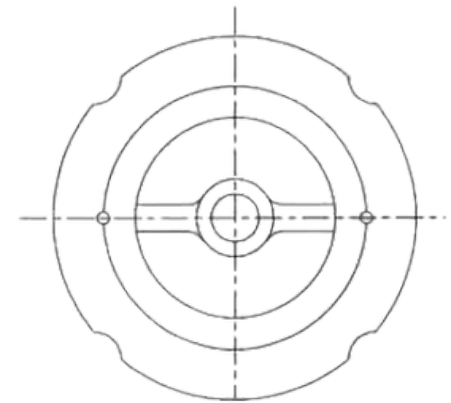
Technical Data

Size	DN50-DN300
Working Pressure	PN16/Class 125
Flange Drilling	ANSI B16.1 Class 125, EN1092-2 PN16.
Inspection and Test	AP1598

All available Flange drilling kindly refer to the attached Flange Drilling Dimensions

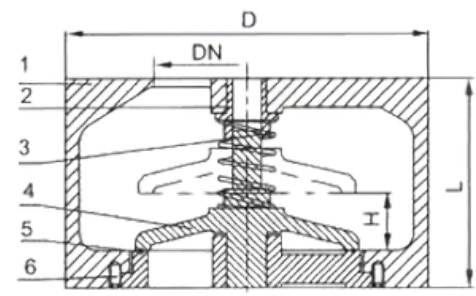
Product Features

Non-slam pump discharge check for water or clean fluids. Cast iron body with bronze or stainless steel plug and seat, replaceable rubber seat ring for drop-tight shutoff. Available for working pressures to 400 PSI with integral flanged connections. Manufactured in size 2 to 12 inches (50 to 300 mm). Larger sizes to 24 inches (600 mm) and alternate materials for higher pressures are available

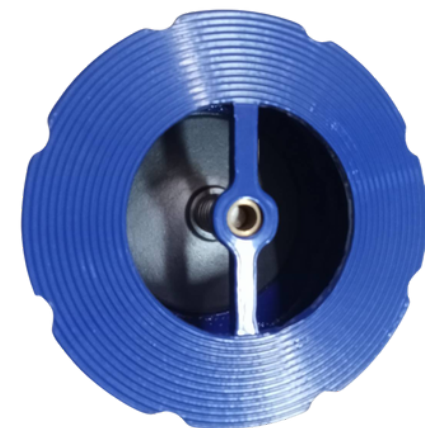


Material of Construction

Parts	Description	Material	Specification
1	Body	CastIron	Cast Iron
2	Bushing	Stainless Steel	A351 CF8M
3	Spring	Stainless Steel	AISI 316
4	Disc	Stainless Steel	AISI 316
5	O Ring	EPDM/NBR/VITON	
6	Screw	Stainless Steel	AISI316



Size		L	D	H	Cv
DN	NPS				
50	2"	69.8	108	13	40
65	2.5"	73	127	17	60
80	3"	82.5	146	20	85
100	4"	101.6	177.8	25	150
125	5"	117.6	212.8	32	230
150	6"	139.7	247.6	38	340
200	8"	139.7	301.7	50	600
250	10"	209.5	406	63	900
300	12"	285.7	482.6	75	1100



FMT Products specifications in this catalogues are provided for reference only. For precise measurements, please contact FMT Technical Service, FMT reserve the right to change or modify product design, construction, specifications, or materials without prior notice and without incurring any obligation to make such changes and modifications on FMT products previously or subsequently sold.