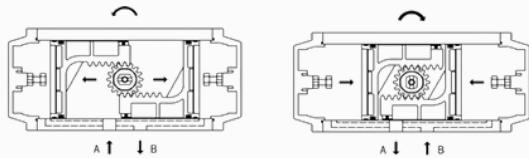
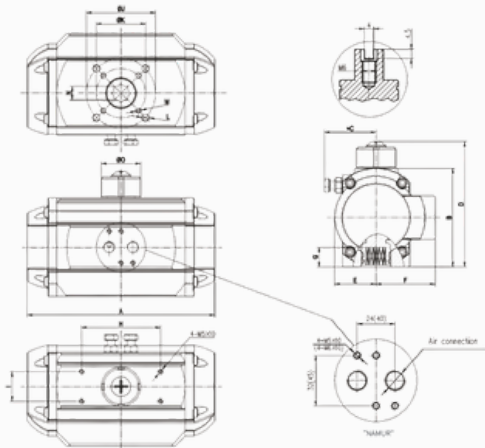


# PNEUMATIC ACTUATOR TB SERIES

## DOUBLE ACTING



1. Air from Port A forces the pistons outwards, causing the springs to compress, the pinion turns counter-clockwise to open the valve while air is being exhausted from Port B
2. Air from Port B forces the pistons inwards, causing the springs to compress, the pinion turns clockwise to close the valve while air is being exhausted from Port A



### ◆ Data Requirement

- 1) VALVE TORQUE (MIN, 25% SAFETY RECOMMENDED).
- 2) DOUBLE ACTING OR SPRING RETURN OPERATION
- 3) MINIMUM AVAILABLE OPERATING PRESSURE.

A	B	C	D	E	F	G	H	I	J	K	L	M	N	O	AIR
154	74	45	99	30	47	14	80	30	F05Φ50	F03Φ36	M6X11	M5X10	11	40	G1/4

### ◆ Output Torque of Double Acting Actuator

Unit : Nm

Air Pressure (Bar)						
2	3	4	5	6	7	8
7.9	11.9	15.9	19.9	23.8	27.8	31.7

**FMT Products specifications in this catalogues are provided for reference only. For precise measurements, please contact FMT Technical Service, FMT reserve the right to change or modify product design, construction, specifications, or materials without prior notice and without incurring any obligation to make such changes and modifications on FMT products previously or subsequently sold**